

BTS Biogas Srl/GmbH

Company Profile



Our company: guiding themes



- **Energy** generation in a complete and natural cycle (through the fermentation of biomass)
- Contribution to the **environmental protection**
- **Satisfaction** of our clients
- Highest **quality**, continuous **innovation** and **high profitability** of our plants
- Our corporate activity is characterized by a sense of duty and **sustainability**



BTS Biogas: short description



BTS Biogas, the leading Italian player in the biogas industry, is active in the design, engineering and construction of modular biogas power plants with a rated capacity of 50 kW to 1.5 MW+.

Since its foundation more than twenty years ago, BTS has built 170 plants with a total capacity of 134 MW. With its full-service contracts, the company offers a complete package for operators comprising maintenance, servicing and biological support.

BTS's activities cover the entire value chain, from biomass cultivation to the use of digestate. BTS Biogas engineers plants that make exclusive use of agricultural residues such as wheat, rice or corn straw, manure, landscaping material and organic wastes.

The company has 120 employees (biologists, technicians, chemists and agronomists) committed to product development and enhancement at BTS Biogas.

Their competence and over twenty years of experience in the energy sector make TS energy GROUP, to which BTS Biogas and GTS Syngas are affiliated, Italy's biggest operator for one-stop shopping in the field of biogas.

BTS Biogas: general informations



BTS Biogas Srl/GmbH

- **Headquarter:** Brunico (South Tyrol) - Italy
- **Headcount:** 120 (biologists, technicians, chemists, agronomists, developers)
- **Net sales (2012):** 74.80 million euros
- **Growth in sales (2012):** 61.13 percent
- **Products:** Modular biogas plants, capacity 50 kW to 1.5 MW+
- **Plants:** 170 (total capacity 134 MW)

BTS Biogas: general informations



- **Customers:** Agricultural companies, local authorities
- **Input:** Agricultural wastes, residues and byproducts and other organic wastes
- **Output:** Electric energy, thermal energy (heating and cooling) and organic methane (for fuel and grid infeed)
- **Full Service** - maintenance, technical service and biological support

The Group



BIOGAS

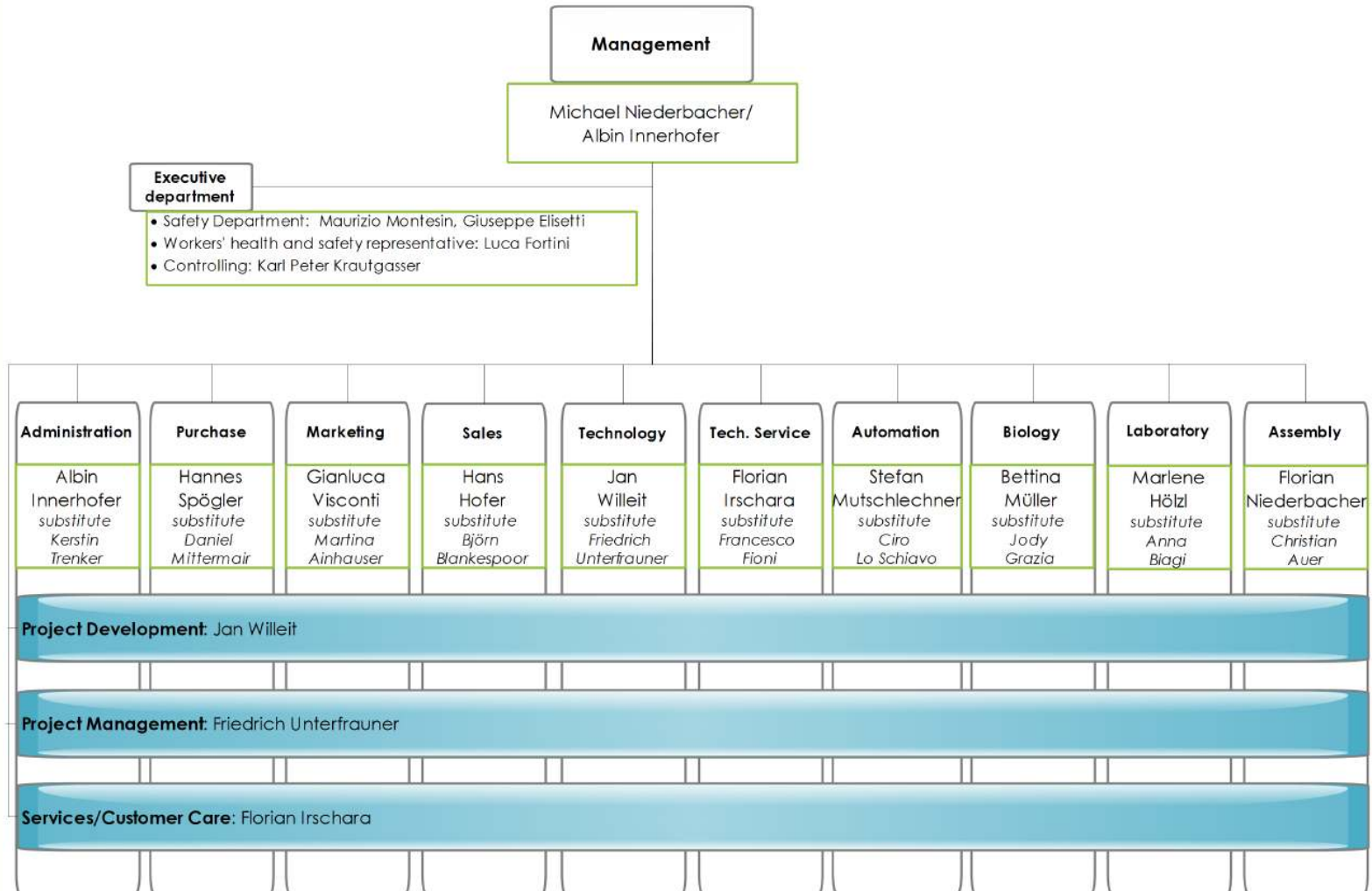


SYNGAS

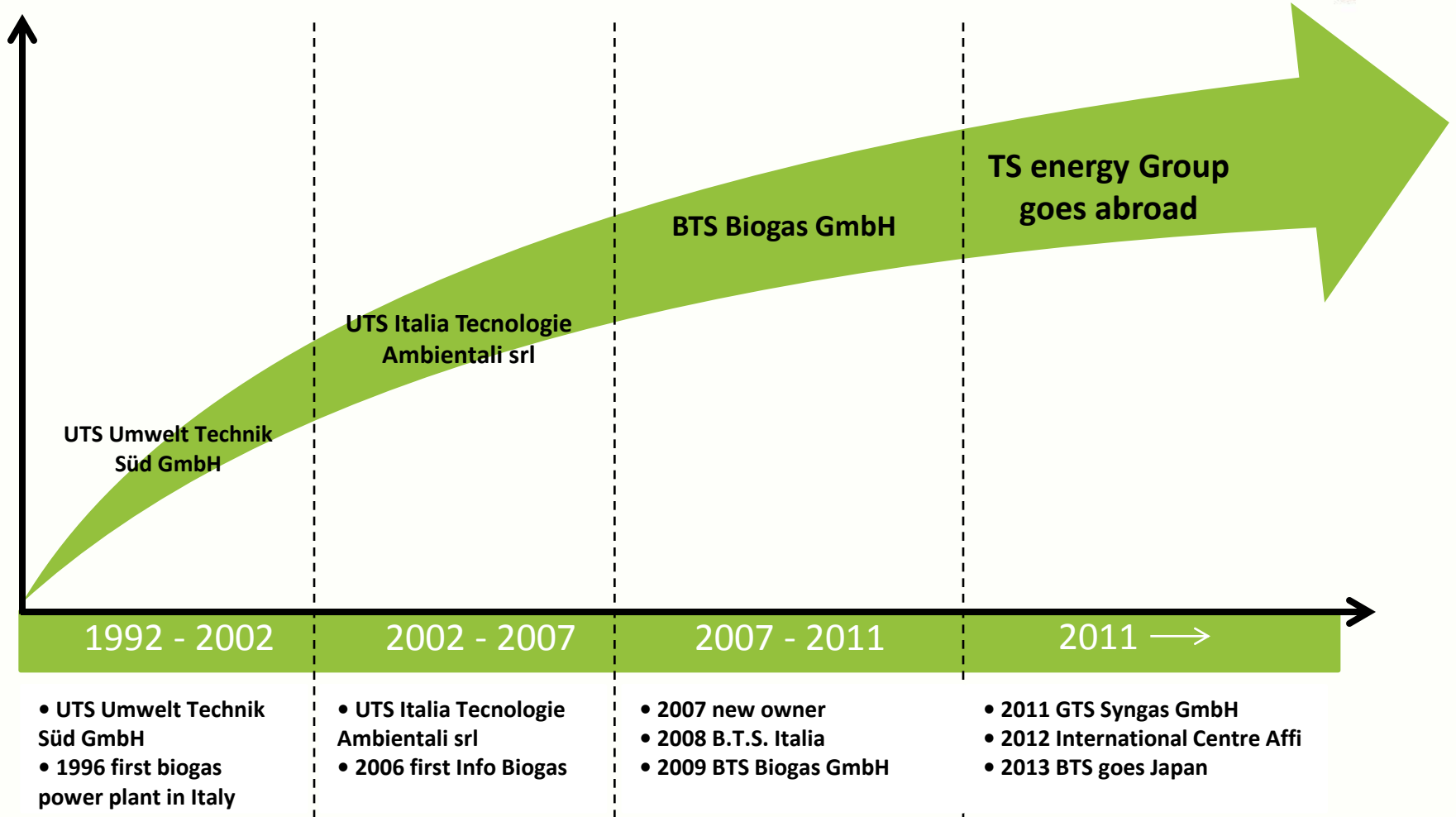


AGRICULTURE

The Company



Our company: a short history



Our company: key milestones

- 1996** – First biogas power plant in Italy
- 2002** – Founding of U.T.S. Italia Tecnologie ambientali s.r.l.
- 2003** – First cooperative plant with 1 MW in Italy (Sand in Taufers, BZ)
- 2004** – First operational plant with 1 MW in Italy (Maleo, LO)
- 2005** – First plant with district heating connection (Terenten, BZ)
- 2006** – First plant using slaughterhouse waste (Fossato di Rodigo, MN)
- 2007** – First Dry biogas plant in Italy (Gambarana, PV)
- 2008** – Founding of B.T.S. Italia – Founding of the TS energygroup and first plant using BIOaccelerator^s
- 2009** – Founding of B.T.S. Biogas GmbH • Development of the product BIOdry
- 2010** – Founding of VBTS
- 2011** – Founding of GTS Syngas srl
- 2012** – Establishment of a new branch in Affi
- 2013** – Agreement with Birumen Kagoshima Co. Ltd. (construction and maintenance of 27 biogas power plants in Japan to be built in the next four years)

Agreement for biogas power plants in Japan



Michael Niederbacher (General Manager BTS Biogas), Koichi Toyozumi (CEO BTS Biogas Japan K.K.), Nomoto Kazuki (Chairman & CEO Birumen Kagoshima), Mitsuyama Masahiro (Executive Director Biosolid Energy), Bjoern Blankespoor (Head of International Sales BTS Biogas)

BTS Biogas Srl/ GmbH signed a strategic agreement with Birumen Kagoshima Co. Ltd. for the construction and maintenance of 27 biogas power plants in Japan to be built in the next four years (for a total power of 35 MW).

Plants in Japan under engineering process

Company / Plant	Location	Country	Startup	Power (kW)	Input
TOEI	Nagoya	Japan	2014	1.487	Chicken litter, Organic Waste
Nara Farm	Maebashi	Japan	2014	1.487	Cattle manure, Food waste, Grass silage
BioSolid/Shinjyo	Shinjyo	Japan	2014	1.900	Rice and Beef waste, agricultural residue, Tofu residue, Fats, Food residue
NET AID	Okinawa	Japan	2014	1.000	Cattle manure, Pigs manure, Poultry manure, Food waste
Ise F./Shikama	Shikama	Japan	2015	1.000+1.000	Chicken manure, Cattle manure, Wastewater sludge, Food waste
Ura Farm	Fukuoka	Japan	2015	1.000	Pigs manure, Cattle manure, Rice straw,
BioSolid/Mogami	Mogami	Japan	2015	500	GTS woodchips
BioSolid/Mogami	Mogami	Japan	2015	500	Food waste

Our company: subsidiaries



ITALY: Brunico (BZ) - Headquarter
Affi (VR) - Logistic & International Training Center
Porto Mantovano (MN) - Service Center & Laboratory

GERMANY: Feldkirchen-Westerham

UK: Hampshire

FRANCE: Nantes

BRAZIL: São Paulo

CANADA: Toronto

JAPAN: Kagoshima and Tokyo

Our company: subsidiaries



Logistics & International Training Centre
Affi (VR) – Italy
800 m² offices
3500 m² warehouse
18500 m² surface



Our own „**METANlab laboratory**“ in
Porto Mantovano (MN) Italy

First company in Italy with an own
biogas laboratory - METANlab



Our company: BTS Biogas Worldwide



ITALY

- Brunico (BZ)
- Affi (VR)
- Porto Mantovano (MN)

GERMANY

- Feldkirchen-Westerham

FRANCE

- Nantes

UK

- Hampshire

ROMANIA

- Bucharest

SLOVENIA

- New Goriza

SERBIA

- Čačak

TURKEY

- Istanbul

CANADA

- Toronto

BRAZIL

- São Paulo

JAPAN

- Tokyo
- Kagoshima

THAILAND

- Bangkok



Our products

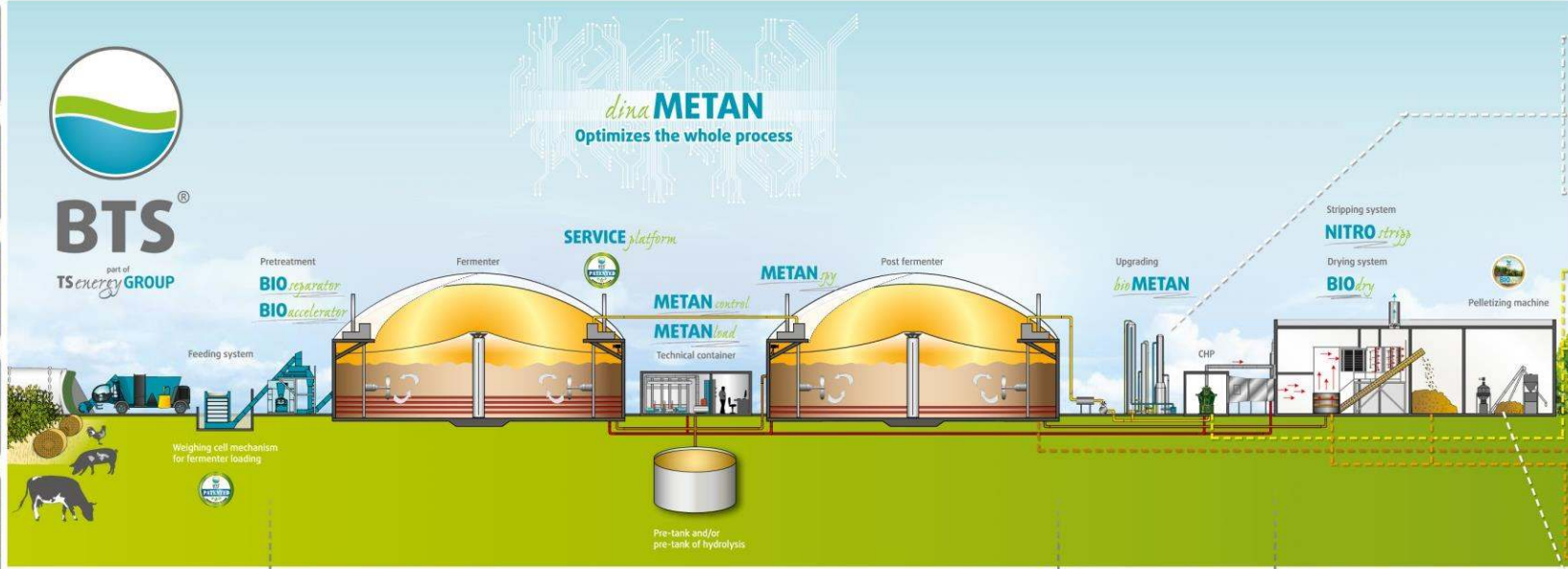


- Turnkey biogas power plants (modules from 50 kW up to 1.5 MW+) which can flexibly be combined and multiplied
- Possible use of various types of biomass
- Customized solutions (for the farmers, industrial agronomists, communities and investors in many countries)
- Software development for our customers



Our integrated technologies

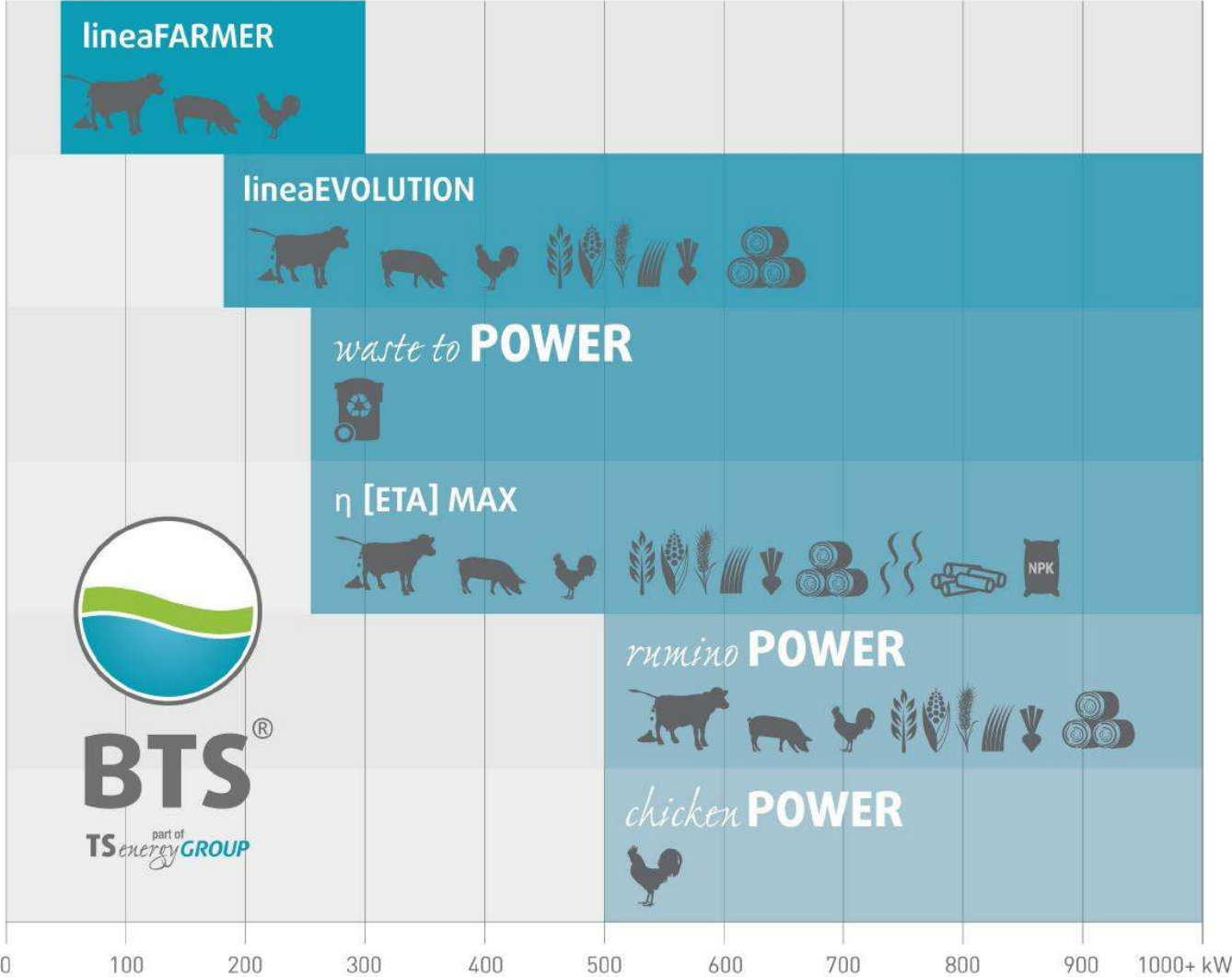
INPUT



OUTPUT



Our products: customized solutions



Our company: what we offer...



- **Over 20 years of experience** in agriculture – in the design, construction and operation of **biogas power plants** (modules from 50 KW up to 1.5 MW)
- A “**Repowering**” of biogas power plants with the **BIOaccelerator** technology (accelerated fermentation and increase of the methane yield thanks to the pre-treatment of the biomass)



Our company: what we offer



- By means of our own **laboratory "METANlab"** we're able to optimize the seed, the harvest, the silage and the biochemical operation of the biogas power plants of our customers
- An occupancy rate of at least **8,000 full-load hours** per year
- **Automation and software development**





BTS[®]
part of
TSenergyGROUP

Top Ten Best Performance Plant

	Pos.	[kW]	kWh Jan-Dec 2012	% of Full production	Full running hours
Soresina	1	634	5.538.512	99,46	8.736
Zambelli	2	996	8.651.679	98,88	8.686
AGT 1	3	999	8.671.338	98,82	8.680
BMZ	4	995	8.634.566	98,75	8.678
Finato	5	700	6.064.662	98,65	8.664
Volpi	6	998	8.640.561	98,58	8.658
Gallmann	7	997	8.626.082	98,49	8.652
Grazioli	8	250	2.162.177	98,44	8.649
Martinoni	9	526	4.543.925	98,28	8.639
Ghione	10	990	8.539.829	98,20	8.626

Average:
8.667 h



References



Italy

Germany

Czech Republic

Poland

References - Italy

Company / Plant	Location	Country	Startup	Power (kW)	Input
Az. Agr. Crocini Francesco	Pienza (SI)	Italy	2014	300	Sweet sorghum silage, tritical whole plants silage, extruded straw
Az. Agr. Canella Federica	Porto Tolle (RO)	Italy	2013	300	Cattle slurry, dry poultry manure, corn silage, vegetables waste
Laser Industries S.r.l.	Portogruaro (VE)	Italy	2013	526	Dairy cattle slurry, cattle manure, corn silage
Az. Agr. Grossi S.S.	San Benedetto Po (MN)	Italy	2013	999	Mais Silage, kitchen waste
Az. Agr. Nuova Scala	Mussomeli (CL)	Italy	2013	999	sudan grass silage, extruded straw, amurca, olive pomace, bran
Az. Agr. Moretti Marco	Ostiglia (MN)	Italy	2013	526	Mais silage
Soc. Agr. DEF Srl	Casaleone (VR)	Italy	2013	Repowering	Corn silage, tritical whole plants silage, corn flour
Soc. Agr. Livraschino	Castelverde (CR)	Italy	2013	300	Dairy cattle slurry, cattle manure, corn silage, chicken manure
Soc. Agr. Tempio del Sole	Narni (TR)	Italy	2013	999	Corn, sweet sorghum, tritical whole plants silage, barley silage
Soc. Agr. Ronconi Giacomo di Ronconi F.Ili s.s.	Marmiolo (MN)	Italy	2013	999	Pig manure, pig slurry, rye grass silage, maize meal
Agricola 2000	Masi Torello (FE)	Italy	2012	999	Corn silage, tritical whole plants silage, extruded straw, beet pulp
Az. Agr. Asti S.S.	Agnadello Cremona (CR)	Italy	2012	999	Corn silage Dairy cattle slurry, cattle manure, corn silage, corn husk silage, tritical whole plants silage, extruded straw, vegetable wastes, olive pomace
Az. Agr. Campomaggio 86 s.r.l.	Agugliano (AN)	Italy	2012	999	olive pomace
Az. Agr. La Valle Green Energy	Casaleone (VR)	Italy	2012	999	Corn silage
Az. Agr. Manaresi	Argenta (FE)	Italy	2012	999	Corn silage
Az. Agr. Tonoli Giuseppe	Codogno (LO)	Italy	2012	999	Swine slurry, tritical whole plants silage
Az. Agr. Valandro Flavio	Longastrino (RA)	Italy	2012	999	Corn silage, sweet sorghum silage, tritical whole plants silage
Az. Agr. Volpi 2	Regona di Pizzighettone (CR)	Italy	2012	999	Dairy cattle slurry, cattle manure, corn silage, ryegrass silage, rice flour
Biomax Società Agricola ar.l.	Coriano (RN)	Italy	2012	999	Corn silage, sweet sorghum silage, tritical whole plants silage
Castiglione biogas Srl	Ravenna (RA)	Italy	2012	999	Swine slurry, corn silage, fruit and vegetable matter

References - Italy



BTS[®]
TSenergyGROUP

Company / Plant	Location	Country	Startup	Power (kW)	Input
Corte Pila Società agricola srl	Roncoferraro (MN)	Italy	2012	999	Cattle manure, corn silage
Futura Energia Soc. Agr. a r.l.	Grosseto (GR)	Italy	2012	999	Corn silage, rice flour
Greenenergy srl	Marmorta - Molinella (BO)	Italy	2012	999	Cattle slurry and cattle manure, swine slurry, corn silage, grass silage
Imm. Agr. Corte Nodari	Villimpenta (MN)	Italy	2012	999	Diary cattle slurry, cattle manure, swine slurry, corn silage
Pro.Energia Soc. Coop. Agricola	Alfonsine (RA)	Italy	2012	999	Corn silage, sweet sorghum silage, tritical whole plants silage
Soc. Agr. Agrisolar	Finale Emilia (MO)	Italy	2012	999	Corn silage
Soc. Agr. Biogas Brusco S.a.r.l.	Cona (VE)	Italy	2012	999	Corn silage
Soc. Agr. Cazzola Paolo und Damiano Srl	Salizzole (VR)	Italy	2012	999	Corn silage, ryegrass silage
Soc. Agr. Chiesa	Asola (MN)	Italy	2012	999	Dairy cattle slurry, cattle manure, corn silage, ryegrass silage
Soc. Agr. Chiesone	Gazzo Veronese (VR)	Italy	2012	999	Cattle slurry, biomass
Soc. Agr. Coste	Genivolta (CR)	Italy	2012	999	Swine slurry, corn silage, sweet sorghum silage, chicken manure Corn silage, sweet sorghum silage, ryegrass silage, tritical whole plants silage
Soc. Agr. Fer Energia ARL	San Martino (GR)	Italy	2012	999	
Soc. Agr. Green Energy S.r.l.	Chiari (BS)	Italy	2012	999	dried chicken manure, swine manure, corn silage, ryegrass silage
Soc. Agr. Locatelli	Camairago Lodi (LO)	Italy	2012	999	Dairy cattle slurry, corn silage, corn straw silage
Soc. Agr. Maleo Energia S.r.l.	Maleo (LO)	Italy	2012	999	Corn silage
Soc. Agr. Mirandola	Bovolone (VR)	Italy	2012	999	Corn silage, cattle manure
Soc. Agr. Montaltor srl	Montalto di Castro (VT)	Italy	2012	999	Corn, sweet sorghum, tritical whole plants silage, barley silage
Soc. Agr. Montone	San Giuliano Milanese (MI)	Italy	2012	999	Corn silage, ryegrass silage
Soc. Agr. Moso	Bagnolo Cremasco (CR)	Italy	2012	999	Corn silage, dairy cattle slurry, cattle manure, rice flour, wheat grains, ryegrass silage
Soc. Agr. Rapolano Green Energy	Rapolano Terme (SI)	Italy	2012	999	Corn silage

References - Italy



BTS[®]
TSenergyGROUP

Company / Plant	Location	Country	Startup	Power (kW)	Input
Soc. Agr. Rusta	Trevenzuolo (VR)	Italy	2012	999	Beef cattle slurry, cattle manure, corn silage
Soc. Agr. UDI Mandrione Alto Srl	Canino (VT)	Italy	2012	999	Corn, sweet sorghum, tritical whole plants silage, barley silage
Soc. Agr. VBIO 1 S. A.	Corridonia (MC)	Italy	2012	999	Slurry, cattle manure, corn silage, sweet sorghum silage, tritical whole plants silage, extruded straw, corn straw, glycerin, molasses
Soc. Agr. VBIO 2	Loro Piceno (MC)	Italy	2012	999	Slurry, corn silage, sweet sorghum silage, tritical whole plants silage, extruded straw, corn straw, glycerin, molasses
Soc. Coop. ZooT. La Torre	Isola della scala (VR)	Italy	2012	999	Beef cattle slurry, cattle manure, corn silage
Società Agricola Doiola S.r.l	Tromello (PV)	Italy	2012	999	Swine slurry, corn silage, sweet sorghum silage
Società Agricola Ronconi Giacomo	Marmirolo (MN)	Italy	2012	999	Slurry, manure, ryegrass silage
Società Agricola San Vittore S.r.l.	Tromello (PV)	Italy	2012	999	Swine slurry, Corn silage, sweet sorghum silage
Volteo Energie Spa	Aprilia (LT)	Italy	2012	999	Corn silage, tritical whole plants silage, vegetable wastes, dairy cattle slurry
Wood Energy Società Agricola Srl.	Civitella, Paganico (GR)	Italy	2012	999	Corn silage
Agrosocietà di Rinaldi A.P.C. 4	Formigara (CR)	Italy	2012	998	Corn husk silage, tritical whole plants silage, extruded straw
Soc. Agr. Energie Rinnovabili Poggese S.r.l.	Villa Poma (MN)	Italy	2012	998	Sweet sorghum silage, tritical whole plants silage, ryegrass silage, corn silage
Soc. Agr. Genola s.s.	Rivarolo Canavese (TO)	Italy	2012	800	Corn silage, tritical whole plants silage, ryegrass silage, extruded straw
Soc. Agr. Masini	Nogara (VR)	Italy	2012	703	Cattle slurry, cattle manure, corn silage, ryegrass silage
Soc. Agr. Padania	Offanengo (CR)	Italy	2012	637	Corn silage, tritical whole plants silage, glycerine, corn flour
Società Agricola Foroni s.s.	Mantova (MN)	Italy	2012	635	Dairy cattle slurry, cattle manure, corn silage
Soc. Agr. Biagi	Borgoforte (MN)	Italy	2012	625	Dairy cattle slurry, cattle manure, swine slurry, corn silage, tritical whole plants silage, rice flour
Soc. Agr. Case Levi Srl	Monastier di Treviso (TV)	Italy	2012	537	Cattle manure, cattle slurry, corn and fruits, corn silage, ryegrass silage
Soc. Agr. L'Amicizia Srl	Modigliana (FC)	Italy	2012	537	Swine slurry, corn silage, sweet sorghum silage, ryegrass silage, tritical whole plants silage
Soc. Agr. Agrico Power-Energy	Nogara (VR)	Italy	2012	526	Corn silage

References - Italy

Company / Plant	Location	Country	Startup	Power (kW)	Input
Soc. Agr. Livraschino	Castelverde (CR)	Italy	2012	300	Dairy cattle slurry, cattle manure, corn silage, chicken manure
Az. Agr. Rizzi	Budrio (BO)	Italy	2012	250	Corn silage, tritical whole plants silage
Rezzonica Castelbarco	Vigasio (VR)	Italy	2012	250	Swine slurry, cattle slurry, cattle manure, corn silage
Soc. Agr. Scattolin	Marcon (VE)	Italy	2012	250	Biomass, cattle slurry, cattle manure
Az. Agr. MaMolke Maurizio	Noale (VE)	Italy	2012	249	Fertilizers and organic waste
Cons. Agr. Bio-Energy	Marsciano (PG)	Italy	2012	100	cattle manure, swine slurry, tritical whole plants silage, whey
Plant Fuchsbrugger	Caminata (BZ)	Italy	2012	50	Cattle slurry, cattle manure, corn silage
Az. Agr. Canella Giancarlo	Porto Tolle (RO)	Italy	2011	999	Corn silage, cereal silage
Az. Agr. Garrione	San Germano Vercellese (VC)	Italy	2011	999	Corn silage, ryegrass silage, extruded straw Sweet sorghum silage, corn silage, tritical whole plants silage, beef cattle slurry, citrus pulp, olive pomace
Az. Agr. Le Verdi Praterie	Isola C. Rizzuto (KR)	Italy	2011	999	
Az. Agr. Mezzanato Antonio	Porto Viro (RO)	Italy	2011	999	cattle slurry and cattle manure, corn silage, tritical whole plants silage
Az. Agr. Navate	Navate di Lograto (BS)	Italy	2011	999	Corn silage, tritical whole plants silage, ryegrass silage, sweet sorghum silage
Az. Agr. Volpi	Cascina Morte d'Orlando (CR)	Italy	2011	999	Cattle slurry, manure, chicken manure, corn silage, tritical whole plants silage, sweet sorghum silage
BIO.GAS.MERSE A.R.L.	San Rocco a Pilli (SI)	Italy	2011	999	Grass silage, corn silage, ground grain, cattle manure
MZ Biogas SARL	Ariano nel Polesine (RO)	Italy	2011	999	Corn silage, cattle slurry, ryegrass silage, dried chicken manure
Soc. Agr. Belvedere di Zambelli	Lomello (PV)	Italy	2011	999	Cattle slurry, biomass
Soc. Agr. BMZ srl	Villa Bartolomea (VR)	Italy	2011	999	Chicken manure, corn silage, ryegrass silage
Soc. Agr. Cairo Dallera	Pieve del Cairo (PV)	Italy	2011	999	Cattle slurry, biomass
Soc. Agr. Coop. Italia Energia	Bellaguarda di Viadana (MN)	Italy	2011	999	Cattle slurry and cattle manure, corn silage, ryegrass silage
Soc. Agr. Gallmann Bioenergy s.a.s.	Chioggia (VE)	Italy	2011	999	Corn silage, rice flour

References - Italy



BTS[®]
part of
TSenergyGROUP

Company / Plant	Location	Country	Startup	Power (kW)	Input
Soc. Agr. Martini Florindo	Maccacari (VR)	Italy	2011	999	Cattle slurry and cattle manure, swine slurry, corn silage
Soc. Agr. Metagri Gestione S.r.l.	Milzano (BS)	Italy	2011	999	Dairy cattle slurry, corn silage, tritical whole plants silage
Energia Nuova	Talacchio di Colbordolo (PU)	Italy	2011	990	Swine manure, different silages
Re-Energy	Castelbelforte (MN)	Italy	2011	990	Swine slurry, corn silage, sweet sorghum silage, extruded straw
Az. Agr. Finato	Concamarise (VR)	Italy	2011	700	Cattle slurry, corn silage, ryegrass silage
Az. Agr. La Carnita	Quintano (CR)	Italy	2011	635	Dairy cattle slurry, cattle manure, corn silage
Soc. Agr. Grazioli Luigi und C.S.S.	Borghetto Lodigiano (LO)	Italy	2011	250	Swine slurry, cattle manure, dairy cattle slurry, green corn straw silage
Az. Agr. Pasquali	Pieve San Giacomo (CR)	Italy	2010	999	Corn silage, ryegrass silage, dairy cattle slurry, cattle manure, chicken manure
Az. Agr. Veggia	Cocconato d'Asti (AT)	Italy	2010	999	Cattle slurry, corn silage, tritical whole plants silage, sweet sorghum silage
Montello S.p.A.	Montello (BG)	Italy	2010	999	Corn silage, ryegrass silage, tritical whole plants silage, sweet sorghum silage
Soc. Agr. Agrilandia srl	Mandrogne (AL)	Italy	2010	999	Corn silage, sweet sorghum silage, swine slurry
Soc. Agr. Agrobon	Viadana (MN)	Italy	2010	998	Manure, corn silage, tritical whole plants silage, sweet sorghum silage
Az. Agr. Santa Caterina	Bastida Pancarana (PV)	Italy	2010	995	Corn silage, tritical whole plants silage
Soc. Agr. Le Gerre II	Crotta d'Adda (CR)	Italy	2010	995	Swine slurry, corn silage and tritical whole plants silage
A.G.T. Società Agricola s.s.	Gagnano Trebbiense (PC)	Italy	2010	990	Dairy cattle slurry, tomato skin, corn silage, cow dung, extruded straw
Az. Agr. Mora	Castelnuovo Scrvia (AL)	Italy	2010	990	Cattle slurry and cattle manure, corn silage
Az. Agr. Valentino	Pizzighettone (CR)	Italy	2010	990	Corn silage, tritical whole plants silage
Soc. Agr. Besozzi	Salerano sul Lambro (LO)	Italy	2010	990	Corn silage, ryegrass silage, straw
Az. Agr. S. Antonio	Pessina Cremonese (CR)	Italy	2010	600	Cattle slurry and cattle manure, corn silage, ryegrass silage
Soc. Coop. Agr. Pieve Ecoenergia	Cingia de Botti (CR)	Italy	2009	999	Cattle manure, corn silage

References - Italy

Company / Plant	Location	Country	Startup Power (kW)		Input
Agricola Morari s.s.	Chioggia (VE)	Italy	2009	990	Corn silage, tritical whole plants silage, sweet sorghum silage cattle slurry and cattle manure, corn silage, ryegrass silage, rice flour
Az. Agr. Antonio S.S. di Pasini	Molinella (BO)	Italy	2009	990	
Az. Agr. Bettegno	Ponteveco (BS)	Italy	2009	526	Cattle slurry, corn silage, cattle manure
Az. Agr. Canella Giancarlo	Porto Tolle (RO)	Italy	2008	999	Corn silage, sweet sorghum silage, rye silage, glycerine
Az. Agr. Cazzola	Salizzole (VR)	Italy	2008	999	Corn silage, ryegrass, rye, rye and wheat, rice flour
Az. Agr. Cerioli Alex	Viadana (MN)	Italy	2008	999	Cattle slurry and cattle manure, corn silage and grass silage
Bioenergie St. Lorenzen	San Lorenzo di Sebato (BZ)	Italy	2008	999	Cattle slurry and cattle manure, fruit pulp
Cascina Valcova	Belgioioso (PV)	Italy	2008	999	Swine and cattle slurry, corn silage, rice flour
Soc. Agr. Le Gerre	Crotta d'Adda (CR)	Italy	2008	999	Corn silage, tritical whole plants silage, sunflower oil Chicken manure, cattle slurry, corn silage, tritical whole plants silage, barley silage
Az. Agr. Manerbiese	Offlaga (BS)	Italy	2008	990	
Agrosocietà di Rinaldi A.P.C. 2	Formigara (CR)	Italy	2008	625	Corn silage, ryegrass silage, dairy cattle slurry, cattle manure,
Fattoria della Piana	Candidoni (RC)	Italy	2008	625	Cattle slurry and cattle manure, grass silage, corn silage Chicken manure, slurry and cattle manure, corn silage, sweet sorghum and rye, apple pulp
Az. Agr. Ansele	Marebbe (BZ)	Italy	2008	50	
Az. Agr. Gomiero	Limena (PD)	Italy	2007	999	Corn silage, cattle slurry
Bioenergie Schluderns	Sluderno (BZ)	Italy	2007	692	Cattle slurry, cattle manure, apple pulp
Az. Agr. Castello	Gambarana (PV)	Italy	2007	330	Corn silage and tritical whole plants silage
Agrosocietà di Rinaldi A.P.C. 1	Formigara (CR)	Italy	2006	1.360	Corn silage, tritical whole plants silage, sweet sorghum silage Swine and cattle slurry, tomato skin, beet pulp, corn silage, rice flour
Cascina La Giorgetta	Pozzolo Formigaro (AL)	Italy	2006	1.250	
Mantovagricoltura	Fossato di Rodigo (MN)	Italy	2006	955	Corn silage, apple pulp, sweet sorghum silage
Az. Agr. Andretta	Marcon (VE)	Italy	2005	1.062	Cattle slurry, corn silage

References - Italy



BTS[®]
part of
TSenergyGROUP

Company / Plant	Location	Country	Startup	Power (kW)	Input
Agrarenergie GmbH	Terento (BZ)	Italy	2005	380	Slurry, manure, biomass
Az. Agr. Campone	Costa De Nobili (PV)	Italy	2004	2.200	Cattle slurry, corn silage, tritical whole plants silage, ryegrass silage
Az. Agr. Tenca	Orzinuovi (BS)	Italy	2004	350	Swine slurry, animal skeleton, straw
Cascina Guazzina	Borgo San Giovanni (LO)	Italy	2003	955	Cattle slurry and cattle manure, apple pulp, other wastes from the food industry
Cascina Moraro Giovine	Maleo (LO)	Italy	2003	955	Cattle slurry and cattle manure, tomato skin, tritical whole plants silage, ryegrass and barley
BLOWATT GmbH	Campo Tures (BZ)	Italy	2002	940	Cattle manure, corn silage
Az. Agr. Pont Ennio	Nus (AO)	Italy	2002	50	Cattle slurry, tomato skin, corn silage, barley straw, wheat straw, corn straw
Az. Agr. Johann Mayr	Terento (BZ)	Italy	2002	37	Cattle slurry, apple pulp, cattle manure
Az. Agr. Kofler Georg	Val Sarentino (BZ)	Italy	2001	37	Fertilizers, apple pulp
Az. Agr. Crazzolara Luca	San Cassiano (BZ)	Italy	2000	65	Cattle slurry and swine slurry, corn silage and tritical whole plants silage
Az. Agr. Markart	Campo di Trens (BZ)	Italy	1996	50	Cattle slurry, corn silage, tritical whole plants silage
Az. Agr. Steger Paul	Campo Tures (BZ)	Italy	1996	18	Pomace, corn silage, swine manure, organic waste

**TOTAL INSTALLED POWER:
109 MW**

References - Germany



BTS[®]
part of
TSenergyGROUP

Company / Plant	Location	Country	Startup	Power (kW)	Input
JVA Bernau	Bernau	Germany	2013	190	Pig manure, pig slurry, cattle manure, cattle slurry, rye grass silage, grass silage, corn silage, raw potatoes
Familie Kern	Pliening	Germany	2013	Repowering	corn silage, ryegrass, whole plants silage
Biogas Höhnstedt GmbH	Höhnstedt	Germany	2011	800	Corn silage, cattle manure
Az. Agr. Leonbacher	Maisach	Germany	2011	500	Corn silage, sweet sorghum silage, tritical whole plants silage, fruit pulp of citrus fruits, olive pomace
Energiepark Aßling GmbH	Aßling	Germany	2011	400	Grass silage, dairy cattle manure, horse manure
Bioenergie Schlieben GmbH	Schlieben	Germany	2011	390	Dairy cattle slurry, cattle manure, wheat grains, silage, cattle slurry
Bioenergie Schainbach GbR	Schainbach	Germany	2010	720	Cattle slurry, corn silage, whole plants silage
Bioenergie Holzäckerhof	Unterpleichfeld	Germany	2010	500	Mais silage, sunflower silage, duck manure
BGA Kees	Schwabniederhofen	Germany	2010	390	Cattle manure, corn silage, grass silage, wine pomace
Bioenergie Alxing	Alxing	Germany	2010	360	Corn silage
Günthner-Biller	Assling	Germany	2010	190	Cattle slurry and cattle manure, grass silage, corn silage
Thoma	Eresing/Landsberg	Germany	2010	190	Cattle slurry and cattle manure, corn silage, grass silage
Gut Sossau	Sossau	Germany	2009	250	Corn silage, grass silage, slurry and cattle manure, horse manure
Plabst Bioenergie GbR	Unterschweinbach	Germany	2009	250	Cattle slurry and cattle manure, corn silage, ryegrass silage

**TOTAL INSTALLED POWER:
5,2 MW**

References - Czech Republic



BTS[®]
part of
TSenergyGROUP

Company / Plant	Location	Country	Startup	Power (kW)	Input
Budeskovice	Budeskovice	Czech Republic	2013	560	Grass silage, cattle slurry, cattle manure
Kylesovice	Kylesovice	Czech Republic	2013	550	Silages, farm manures and slurries, by-products
Batelov	Batelov	Czech Republic	2013	560	Silages, farm manures and slurries, by-products
Psov	Psov	Czech Republic	2013	550	Grass silage, cattle slurry, cattle manure
Lhota	Lhota	Czech Republic	2013	560	Silages, farm manures and slurries, by-products
Rybnicek	Rybnicek	Czech Republic	2013	560	Corn silage, cattle manure, cattle slurry
Havlickova Borova	Havlickova Borova	Czech Republic	2012	740	Cattle manure, tritical whole plants silage, swine slurry, grass silage, corn silage, potatoes
Hluboka	Hluboka	Czech Republic	2012	620	Corn silage, cattle manure, grass silage
ZOS Kacina a. s.	Kutná Hora	Czech Republic	2011	1.600	Corn silage, grass silage, cattle slurry, cattle manure
Kamenice / Lactoenergo s.r.o.	Kamenice	Czech Republic	2011	1000	Cattle manure, corn silage, grass silage, whole plants silage
BGA Kamen	Kamen	Czech Republic	2011	790	Cattle slurry, cattle manure, corn silage, grass silage
BGA Slavikov	Slavikov	Czech Republic	2011	740	Swine slurry, sugar beet, corn silage
Zemedelska	Horni Bradlo	Czech Republic	2011	740	Corn silage, manure and cattle slurry
Energy produkt plus	Suchdol nad Odrou	Czech Republic	2011	620	Cattle slurry, horse manure, grass silage
Energy produkt plus s.r.o.	Cihost	Czech Republic	2011	620	Corn silage, cattle manure, cattle slurry
BGA Krovce	Krovce	Czech Republic	2011	590	Grass silage, corn silage, cattle slurry
Az. Agr. Korolupy	Korolupy	Czech Republic	2011	500	Fertilizers, wastes from the food industry
BGA Bobrova / Bobrovaska a.s.	Bobrova	Czech Republic	2011	370	Slurry, manure, corn silage
Az. Agr. Sasov	Sasov	Czech Republic	2011	250	Corn silage, sweet sorghum silage, tritical whole plants silage, corn cob mix
BGA Dobronin	Dobronin	Czech Republic	2010	620	Cattle slurry and cattle manure, grass silage, corn silage
BGA Smolovy	Smolovy	Czech Republic	2010	620	Swine slurry, swine manure, cattle manure, corn silage, grass silage
Telč	Telč	Czech Republic	2010	620	Cattle slurry and cattle manure, corn silage, ryegrass silage, rice flour, wheat grains

TOTAL INSTALLED POWER:
14,4 MW



BTS[®]
TSenergyGROUP

References - Poland

Company / Plant	Location	Country	Startup	Power (kW)	Input
Przykona	Przykona	Poland	2013	1.670	Silages, farm manures and slurries, by-products

TOTAL INSTALLED POWER:
1,7 MW

Memberships



American biogas council



Anaerobic digestion and biogas association



European biomass association



Associazione italiana energie agroforestali



Associazione produttori energia rinnovabile



Romanian Association of Biomass and Biogas



Umweltcluster Bayern Biogas



Biogasrat



Česká bioplynová asociace



Consorzio italiano biogas



Cross Border Bioenergy



Member of European biogas association



EnergyPartnerInternational



Fachverband Biogas e.V.



Fördergesellschaft nachhaltige Biogas und Bioenergie Nutzung e.V.



Irish Bioenergy Association



Polish Biogas Association



Renewable Energy Association

BTS Biogas helping the environment



Since last October, our Company has been involved in a project – in collaboration with the University of Natural Resources and Applied Life Sciences in Vienna – on the subject of compensation for carbon emissions in the context of business air travel. For every ton of CO₂ emitted, we transfer the sum of 25 euros to a reforestation project in Ethiopia. In October, November and December, we paid compensation for a total of 18.16 tons of CO₂.



Contacts



Italy

Headquarter

BTS Biogas Srl/GmbH
Via San Lorenzo, 34 St. Lorenznerstr.
I-39031 Brunico/Bruneck (BZ)
T +39 0474 37 01 19
F +39 0474 55 28 36
E info(at)bts-biogas.com
IVA: IT 02590590218

Logistic Centre & International Training Centre

Via Vento, 9
I-37010 Affi (VR)
T +39 0454 85 42 05

Service Centre and Laboratory

Via Bachelet, 21
I-46047 Porto Mantovano (MN)
T +39 0454 85 42 05

Germany

Headquarter

BTS Biogas GmbH
Leißstr. 6a
D-83620 Feldkirchen-Westerham
T +49 (0) 8063 20 03 31-1
F +49 (0) 8063 20 03 31-6
E info(at)bts-biogas.com
USt-IdNr: DE 264147694

Japan

Headquarter

BTS Biogas K.K.
6-10-1 Roppongi,
Minato-ku, Tokyo
T 099-226-6677
F 099-223-6540

UK

Sales Office

Castle Malwood Estates
Castle Malwood
Minstead
Hampshire
SO43 7PE

Canada

Sales Office

480 University Avenue, Suite 1500
Toronto, ON, M5G 1V2
T +1 (416) 598-7105
F +1 (416) 598-1840